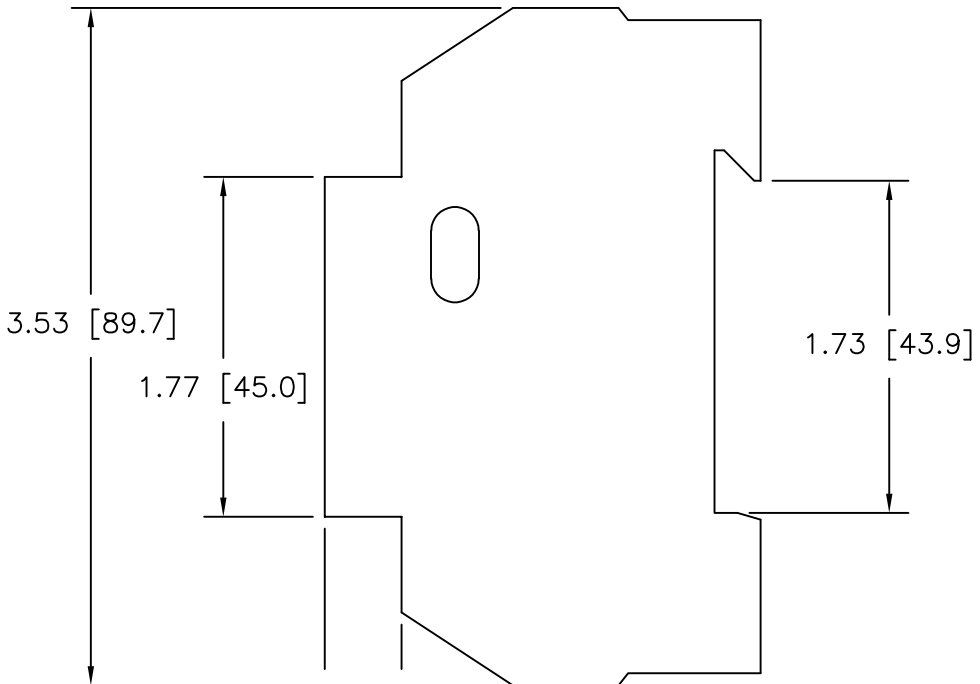
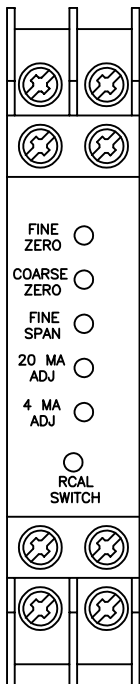
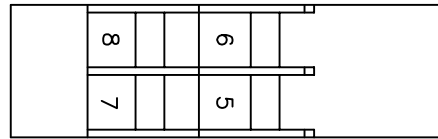


23570

PCB Piezotronics Inc. claims proprietary rights in the information disclosed herein. Neither it nor any reproduction thereof will be disclosed to others without written consent of PCB Piezotronics Inc.

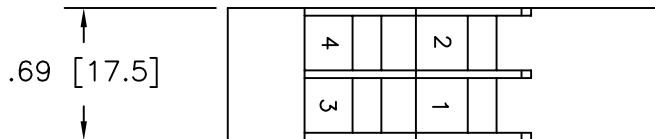
APPLICATION		
NEXT ASS'Y	USED ON	VAR

REVISIONS				
REV	DESCRIPTION	ECN	DATE	APP'D
C	UPDATED TERMINAL CONNECTIONS	50103	10/28/19	PTE



TERMINAL CONNECTIONS

- 1 GROUND
- 2 V SUPPLY (10-28 VDC)
- 3 I OUT (4-20mA)
- 4 V OUT (±5 OR ±10 V)
- 5 - EXCITATION
- 6 + EXCITATION
- 7 - SIGNAL
- 8 + SIGNAL



UNLESS SPECIFIED TOLERANCES	
DIMENSIONS IN INCHES	DIMENSIONS IN MILLIMETERS
DECIMALS XX ±.01	[IN BRACKETS] DECIMALS X ±0.3
XXX ±.005	XX ±0.13
ANGLES ±2 DEGREES	ANGLES ±2 DEGREES
FILLETS AND RADII .003 - .005	FILLETS AND RADII [0.07 - 0.13]
DD011 REV. C 01/21/03	

DRAWN	JM	5.2.05	MFG	JS	6.14.05
CHK'D	DM	6.6.05	ENGR	MJK	6.9.05
APP'D	DMB	5.13.05	SALES	JJM	6.10.05
TITLE OUTLINE DRAWING MODEL 8161 SERIES DIN RAIL MOUNT AMPLIFIER					

PCB LOAD & TORQUE
A PCB GROUP COMPANY
24350 INDOPLEX CIRCLE, FARMINGTON HILLS, MI 48335 U.S.A.
(716) 684-0001 E-MAIL: Info@pcbloadtorque.com

CODE IDENT. NO. 52681

DWG. NO. 23570

SCALE: FULL SHEET 1 OF 1