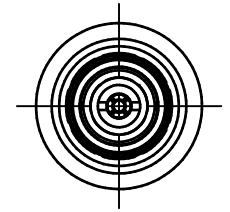
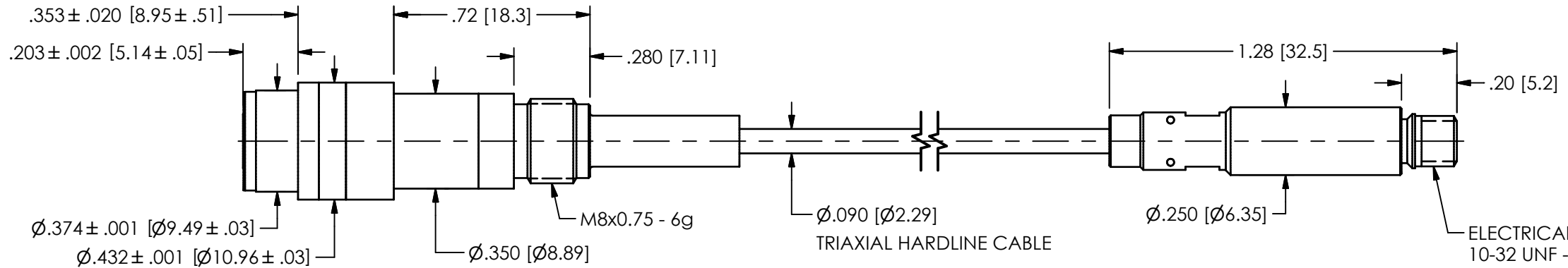


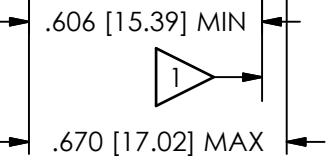
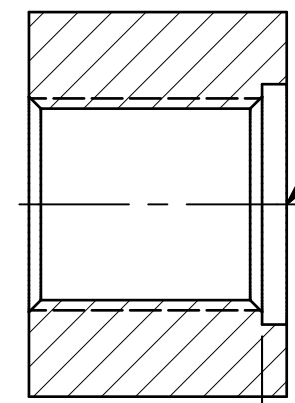
77280

PCB Piezotronics Inc. claims proprietary rights in the information disclosed hereon. Neither it nor any reproduction thereof will be disclosed to others without the written consent of PCB Piezotronics Inc.

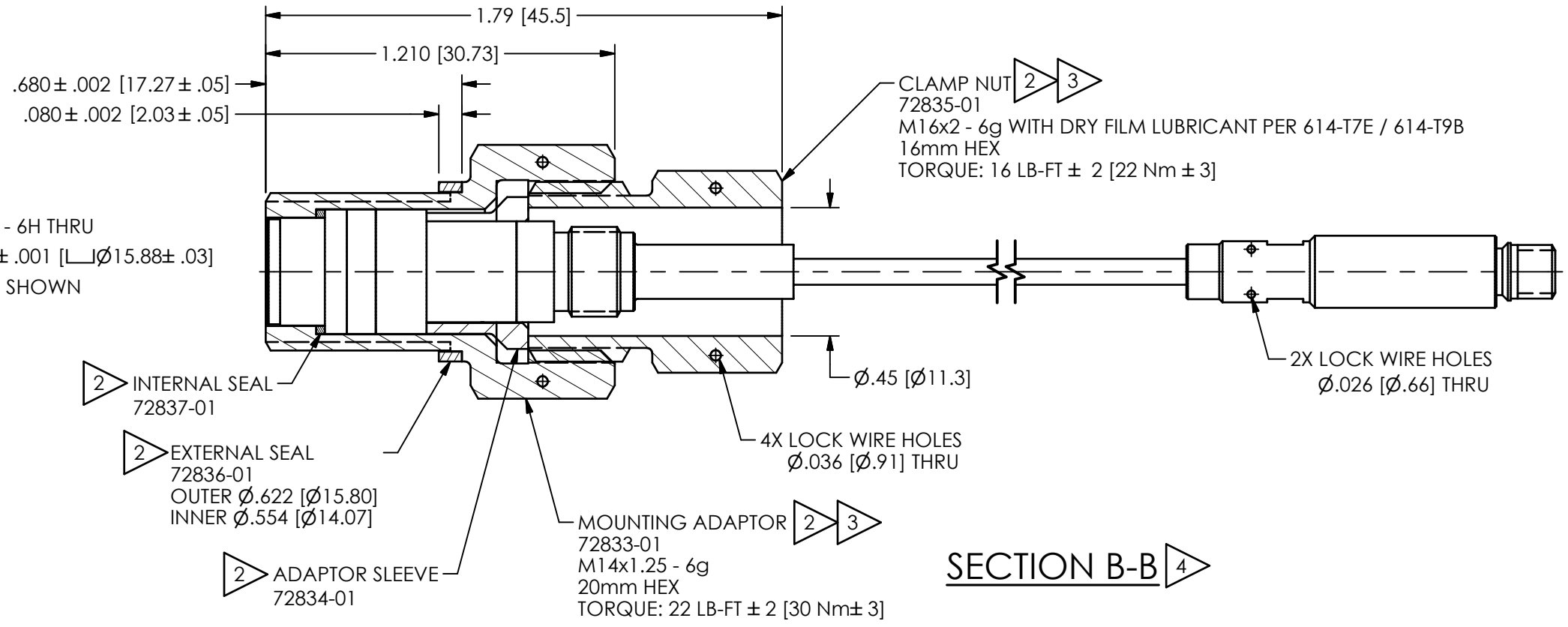
REVISIONS		
REV	DESCRIPTION	DIN
A	UPDATED FLUSH MOUNT DETAILS	54371



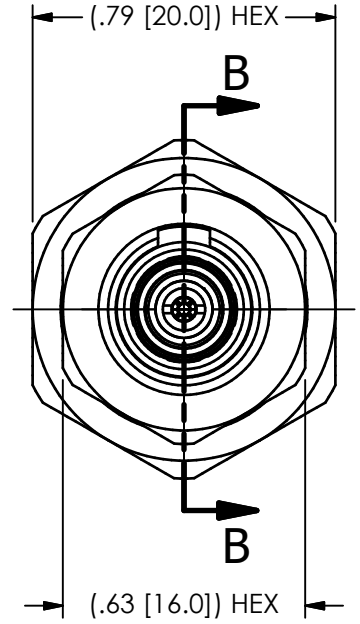
FLUSH MOUNT



MOUNTING HOLE PREPARATION



SECTION B-B



- 4 MOUNTING ADAPTOR 72832-01 SHOWN IN THIS VIEW
- 3 IF SENSOR IS DIS-ASSEMBLED: MUST TORQUE MOUNTING ADAPTOR FIRST, CLAMP NUT LAST, THEN RE-VERIFY MOUNTING TORQUE
- 2 72832-01 CONSISTS OF THESE COMPONENTS: SENSOR IS PRE-ASSEMBLED AND TORQUED IN MOUNTING ADAPTOR SEAL LEAK TESTS VERIFIES BOTH SENSOR AND MOUNTING ADAPTOR AT MAXIMUM PRESSURE
- 1 MATING MACHINE SURFACES TO HAVE A SURFACE ROUGHNESS OF Ra 16 [.4]

UNLESS OTHERWISE SPECIFIED TOLERANCES ARE:		DRAWN	CHECKED	ENGINEER
DIMENSIONS IN INCHES		NJF	11/03/23	JDM
DECIMALS XX ±.01 XXX ±.005				EDB
ANGLES ± 2 DEGREES				11/03/23
CABLE TOLERANCES IN ENGLISH		TITLE		
1" ≤ LENGTH < 1'	= +1"/ - 0	INSTALLATION DRAWING HIGH TEMPERATURE PRESSURE SENSOR		
1' ≤ LENGTH < 5'	= +2"/ - 0			
5' ≤ LENGTH < 100'	= +6"/ - 0			
100' ≤ LENGTH	= +1' / - 0			
FILLETS AND RADII .003 - .005		SCALE: 2X SHEET 1 OF 1		

DRAWN	CHECKED	ENGINEER
NJF	11/03/23	JDM
		EDB
		11/03/23

**PCB PIEZOTRONICS**  
AN AMPHENOL COMPANY

3425 WALDEN AVE. DEPEW, NY 14043  
(716) 684-0001 E-MAIL: sales@pcb.com

CODE IDENT. NO. 52681

DWG. NO. 77280

SCALE: 2X SHEET 1 OF 1